

# BRAND AND PRODUCT PORTFOLIO



# SPACEMAKER

Creative Metal Design Solutions

**Spacemaker** offers creative design solution products of metal that aim to improve home organization and beautify living spaces.

We believe in creating and designing furniture and home decor accessories that elevate your space and give you the freedom to make the space your own.

All our products embody the combination of simplistic and contemporary aesthetics with functionality, versatility, modularity, and durability, making them unique and enduring.

We strive to integrate a sustainable design approach to minimize excessive raw material waste and contribute to recycling materials' lifecycle.



# WE ARE SPACEMAKER

## Space Fitting Solution

Discover quality spaces in your home with designs that allow you to organize and express your lifestyle.

We aim to deliver a new perspective on metal design furnishing for small space homes. Opening up multiple charming possibilities to home decor with practical forms.

## Sustainable Materials

We intent to provide sustainable solutions throughout the product design, manufacturing, and packaging processes. All our products are recyclable, but their high quality makes them long-lasting. We are determined to optimize the size of our packaging and utilize recyclable materials.



**SPACE THAT MATTERS**  
Better space, better living.



# *SIT STORE & SHOW*



SITTING  
SHOE RACK

ZIG ZAG  
HOLDER



**BEST SELLER**

## SITTING SHOE RACK

PRICE 3,490.-

DIMENSION (mm):                      WEIGHT:  
W 599 × H 484 × D 292              11.25 KG

MAX. LOAD CAPACITY:                110 KG



Shortlisted DEmark Show 2023

Have a seat while slipping on your shoes with our sleek and modern **Sitting Shoe Rack** solution. Sit in style and keep your shoes organized.



## SMALL SHOE RACK

PRICE 2,290.-

DIMENSION (mm):                      WEIGHT:  
W 597 × H 348 × D 120              4.36 KG

MAX. LOAD CAPACITY:                40 KG



Sustainably transforming a single material into sleek, folded forms, our **Small Shoe Rack** offers a modern and sleek storage solution.

FB    SpaceMaker.TH  
IG    spacemaker.th  
Line  @spacemaker.th

Available colors:     Black     White     Grey

**BEST SELLER**

## OVAL SIDE TABLE

PRICE 3,490.-

DIMENSION (mm):                      WEIGHT:  
**W 400 × H 600 × D 250              2.96 KG**

MAX. LOAD CAPACITY:              **80 KG**



**Oval Side Table's** versatile design allows for easy placement, multifunctional use and storage, with seamless modern look to match with other decor.



**Shortlisted DEmark Show 2023**

**Zig Zag Holder** keeps your umbrella in place with style and function, featuring a thoughtfully modern crafted design to match your interior decor.

## ZIG ZAG HOLDER

PRICE 1,990.-

DIMENSION (mm):                      WEIGHT:  
**W 363 × H 500 × D 120              6.23 KG**



FB    SpaceMaker.TH  
IG    spacemaker.th  
Line  @spacemaker.th

Available colors:              
Black    White    Grey

**BEST SELLER**

## DOTTED PLANTER — SHORT

PRICE 2,690.-

DIMENSION (mm): WEIGHT:

W 308 × H 301 × D 308 2.11 KG

MAX. LOAD CAPACITY: 60 KG



Shortlisted DEmark Show 2023



Elevate your plants with the **Dotted Planter** - a decorative statement piece that adds dynamic to any room, indoors or outdoors. Available in two heights, Short & Tall size for a more versatile and distinct display. Additionally, with application of wooden cover accessory on its top, the dotted planter becomes a multipurpose piece, functioning as a stool, side table, and storage unit.



Shortlisted DEmark Show 2023

**BEST SELLER**

## DOTTED PLANTER — TALL

PRICE 3,890.-

DIMENSION (mm): WEIGHT:

W 308 × H 451 × D 308 3.33 KG

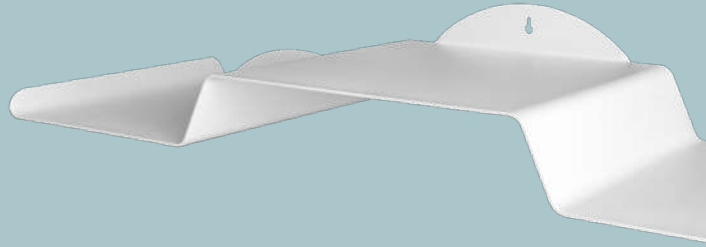
MAX. LOAD CAPACITY: 60 KG



FB SpaceMaker.TH  
IG spacemaker.th  
Line @spacemaker.th

Available colors:  Black  White  Grey





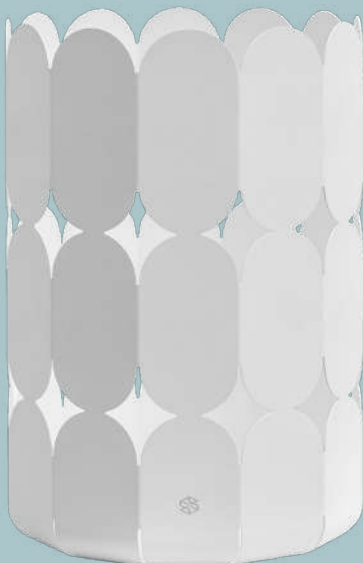
## WE ARE SPACEMAKER

### **Versatile Design and Multi-functional**

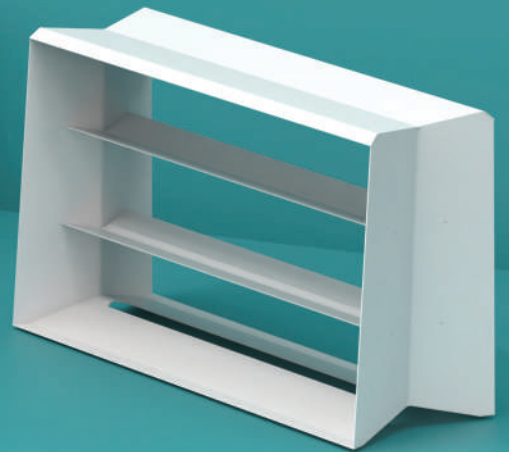
We believe that ordinary furniture should be aesthetically pleasing but also practical. Our modern contemporary products complement the interior and space to reflect the different lifestyles and needs of the people who occupy them.

### **Simple yet, Durable**

All our products are made from metal that embody simplistic and modern design approach to complement its strength and long-lasting characteristics for everyday living application.



# New Collections



# LADYBUG

PRICE 3,590.-

DIMENSION (mm):                      WEIGHT:  
W 380 × H 564 × D 412              5.33 KG



The **Ladybug** Chair is a unique design chair inspired by the form of a ladybug. Its thin and lightweight frame making it easy to move around. While its shape and form are a nod to the ladybug's natural aesthetic. It is a great addition to any home or garden, bringing a touch of nature, comfort, and whimsy to any space.



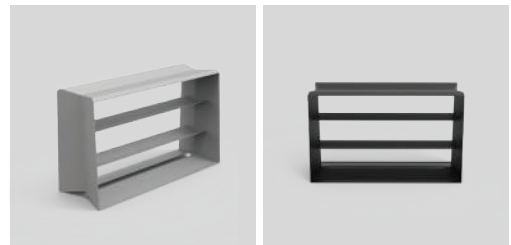
**Sitting Shoe Rack X** now in an extended size to accommodate more shoes for bigger house holds and helps keep your entryway organized and clutter-free. It provides ample storage space for up to 12 pairs of shoes.

# SITTING SHOE RACK X

PRICE 4,990.-

DIMENSION (mm):                      WEIGHT:  
W 804× H 485 × D 293              15.90 KG

MAX. LOAD CAPACITY:              110 KG



The sturdy construction and comfortable curve makes it the perfect place to sit and put on your shoes, while the sleek and modern design complements any home décor.

# CLOVER SIDE TABLE – S

PRICE 2,490.-

DIMENSION (mm):                      WEIGHT:  
**W 280 × H 403 × D 340              5.80 KG**

MAX. LOAD CAPACITY:              **80 KG**



Add personality to any room with the **Clover Side Table**. A unique and eye-catching design inspired by the clover leaf. Features storage and a groove to keep cables hidden.



# CLOVER SIDE TABLE – L

PRICE 3,490.-

DIMENSION (mm):                      WEIGHT:  
**W 350 × H 510 × D 450              9.32KG**

MAX. LOAD CAPACITY:              **80 KG**



# GEO TABLE – S

PRICE 2,890.-

DIMENSION (mm):                      WEIGHT:  
W 445 × H 300 × D 445              6.77 KG



The **Geo Table** collection is a modern and stylish collection of tables with a geometric design. The two stunning designs, oval and circle, add a touch of sophistication to any living room. The Geo Table is both functional and stylish, a place to set down your coffee or simply a beautiful piece of furniture to add to your décor.



# GEO TABLE – M

PRICE 3,590.-

DIMENSION (mm):                      WEIGHT:  
W 445 × H 423 × D 445              7.89 KG



# GEO TABLE – L

PRICE 4,290.-

DIMENSION (mm):

W 600 × H 423 × D 400

WEIGHT:

10.69 KG



## GEO TABLE COLLECTION

FB SpaceMaker.TH  
IG spacemaker.th  
Line @spacemaker.th

Available colors:  Black  White  Grey

# FLOATING NIGHTSTAND

PRICE 790.-

DIMENSION (mm):                      WEIGHT:  
W 260 × H 102 × D 530              2.47 KG



Seamlessly keep your bedside essentials close at hand without taking up any floor space. It can be easily slid under the side of your bed or sofa to hold your coffee, mobile phone, books, glasses, and more.

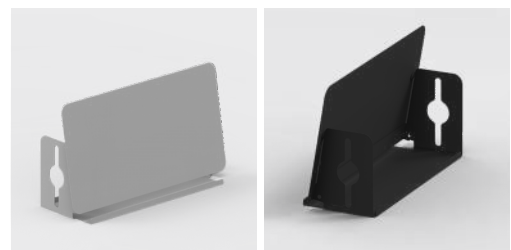


# PLUG N PLAY

PRICE 990.-

DIMENSION (mm):                      WEIGHT:  
W 330 × H 192 × D 110              1.63 KG

This minimalist plug cover is the perfect way to keep your desk organized while working. It also functions as a tablet holder and added features with unique magnet designs used to keep notes in place.

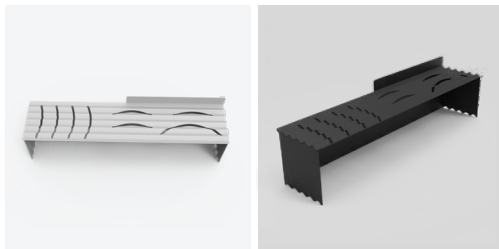


# STACK UP SHELF

PRICE 790.-

DIMENSION (mm):                      WEIGHT:  
W 500 × H 130 × D 120              1.66 KG

---



Multi-purpose stackable organizer is the perfect way to keep your kitchen or workspace organized. It can be used to store cups, plates, condiments, and more. Save space by stacking multiple organizers on top of each other. It is also made of durable materials, so it can withstand everyday use.



# TIDY TRAY SET

PRICE 990.-

DIMENSION (mm):                      WEIGHT:  
W 100 × H 34 × D 270              1.16 KG

---

Set of 5 tray organizers is the perfect way to keep your toothbrush, daily essentials, stationery, or trinkets organized and in style. Can be used on your bathroom countertop, vanity, desk, or anywhere else you need to keep your items organized.





# VERSATILITY THAT MATTERS



SQUARE  
DEC BOARD



SQUARE DEC BOARD | BLACK  
WITH 8 ACCESSORIES

**BEST SELLER**

## SQUARE DEC BOARD

PRICE 1,690.-

DIMENSION (mm): WEIGHT:

W 523 × H 480 × D 20 2.68 KG

MAX. LOAD CAPACITY: 50 KG



The **Square Dec Board** and its accompanying accessories make it effortless to organize and promptly locate your belongings and tools, making it ideal for use in any room of your home. The board can be mounted on a wall or placed to your desk with accessory stand that are sold separately.



## DEC BOARD STAND

PRICE 690.-

DIMENSION (mm): WEIGHT:

W 519 × H 225 × D 248 1.92 KG



Maximize your workspace with the **Dec Board Stand** by easily installing it to your Square Dec Board and keep your essentials at your fingertips.

# CIRCLE DEC BOARD

PRICE 1,590.-

DIMENSION (mm):

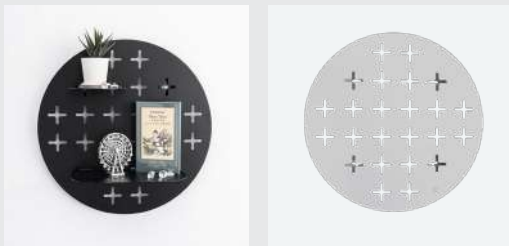
W 405 × H 405 × D 22

WEIGHT:

1.55 KG

MAX. LOAD CAPACITY:

20 KG



The **Circle Dec Board** is perfect for showcasing vertical garden - miniature plants and pots, or even display ornaments to spruce up your small living space. Suitable for both indoors and outdoors.



# OVAL DEC BOARD

PRICE 2,290.-

DIMENSION (mm):

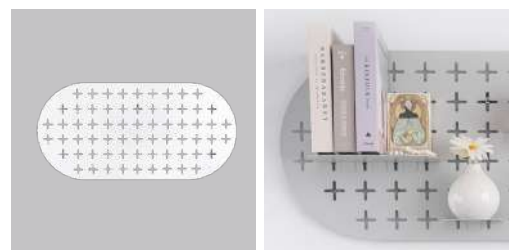
W 846 × H 405 × D 22

WEIGHT:

3.23 KG

MAX. LOAD CAPACITY:

30 KG



**Oval Dec Board** is another extended collection, ideal for displaying your mini garden or decorative items. Mount it vertically, horizontally, or mix and match to create your own unique modular pattern.

# HOLDING RACK — SHORT

PRICE 490.-

DIMENSION (mm):                      WEIGHT:

W 533 × H 50 × D 21                      0.25 KG

MAX. LOAD CAPACITY:                      30 KG



Our durable material and versatile **Holding Rack** along with the storage accessories are designed to give creative home cooks the space and efficiency they need. Available in both wall-drilling and non-drilling design options (Non-drilling option have lower weight load capacity.)



# HOLDING RACK — LONG

PRICE 590.-

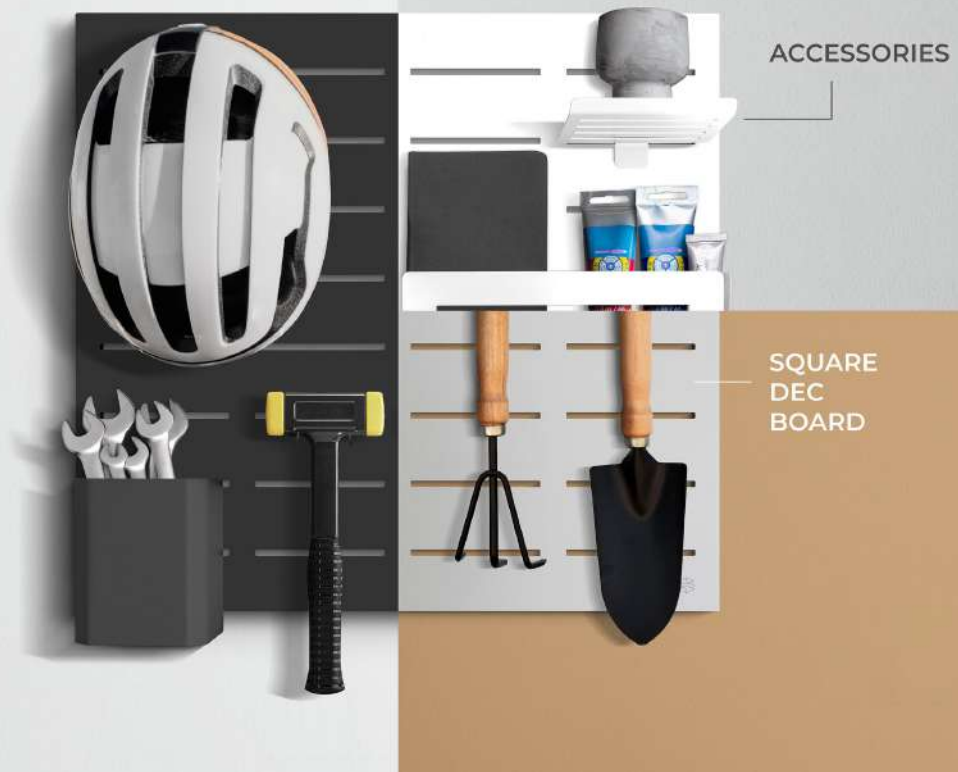
DIMENSION (mm):                      WEIGHT:

W 787 × H 50 × D 21                      0.37 KG

MAX. LOAD CAPACITY:                      30 KG



“  
DIY  
that  
Matters  
”



## ACCESSORIES APPLICABLE WITH

SQUARE DEC BOARD | CIRCLE DEC BOARD | OVAL DEC BOARD | HOLDING RACK

### TABLET HOLDER

PRICE 119.-

DIMENSION (mm):

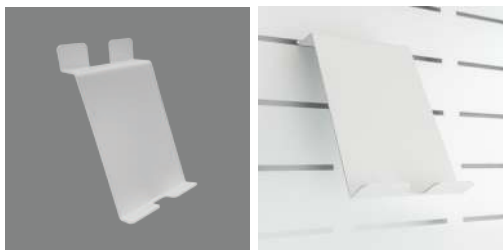
W 97 × H 164 × D 111

WEIGHT:

0.21 KG

MAX. LOAD CAPACITY:

2 KG



The **Tablet Holder** secures your tablet or mobile phone in place as you keep up with recipe tutorials or podcasts.

# SQUARE HOLDER

PRICE 350.-

DIMENSION (mm):

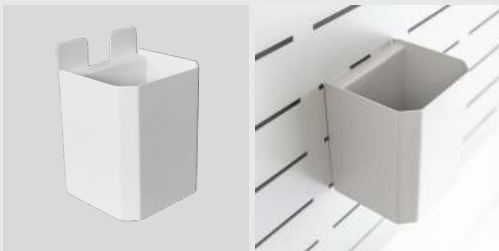
W 99 × H 142 × D 90

WEIGHT:

0.98 KG

MAX. LOAD CAPACITY:

8 KG



Get organized with **Square Holder** on your Dec Board! Keep your stationery, tools, utensils, and more within reach.



# BOOK HOLDER

PRICE 119.-

DIMENSION (mm):

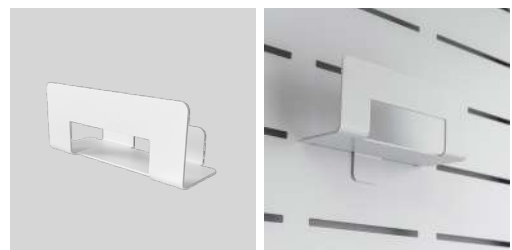
W 124 × H 71 × D 47

WEIGHT:

0.14 KG

MAX. LOAD CAPACITY:

4 KG



Keep in place your favorite books, photos, and items with ease using our **Book Holder** accessory.

# DUO HANGER

PRICE 119.-

DIMENSION (mm):

W 44 × H 45 × D 84

WEIGHT:

0.08 KG

MAX. LOAD CAPACITY:

4 KG



Organize more with **Duo Hanger** on your Dec Board or Holding Rack. Hang kitchen utensils, and more.



# SOLO HANGER

PRICE 119.-

DIMENSION (mm):

W 34 × H 45 × D 47

WEIGHT:

0.03 KG

MAX. LOAD CAPACITY:

4 KG



Organize more with **Solo Hanger** on your Dec Board or Holding Rack. Hang hats, hand towels, trinkets, and more.

# BOTTLE TRAY — SHORT

PRICE 250.-

DIMENSION (mm):

W 124 × H 51 × D 89

WEIGHT:

0.33 KG

MAX. LOAD CAPACITY:

8 KG



Elevate your organization game with **Bottle Tray** series accessories! Tidy up and keep your faves within reach.



# BOTTLE TRAY — LONG

PRICE 300.-

DIMENSION (mm):

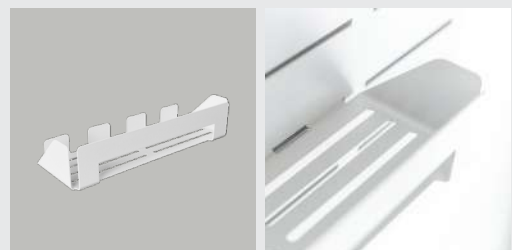
W 250 × H 51 × D 89

WEIGHT:

0.52 KG

MAX. LOAD CAPACITY:

10 KG





# FLAT TRAY — SHORT

PRICE 119.-

DIMENSION (mm):

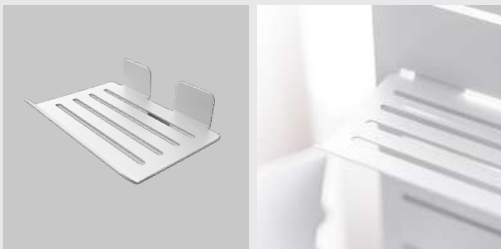
W 124 × H 46 × D 90

WEIGHT:

0.14 KG

MAX. LOAD CAPACITY:

4 KG



Accessorize your Dec Board or Holding Rack with various sizes of **Flat Tray** series for a better organized and personalized space. Keep your favorite items within reach with this great solution!



# FLAT TRAY — LONG

PRICE 250.-

DIMENSION (mm):

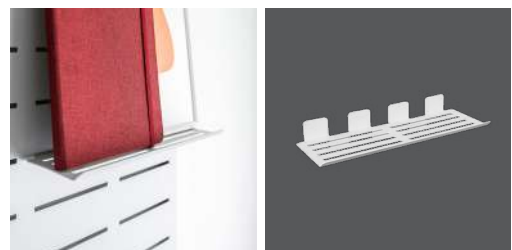
W 250 × H 46 × D 90

WEIGHT:

0.28 KG

MAX. LOAD CAPACITY:

5 KG



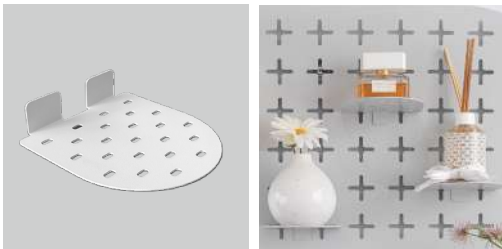
# DOTTED FLAT TRAY — SHORT

PRICE 190.-

DIMENSION (mm):                      WEIGHT:

W 124 × H 46 × D 129                0.18 KG

MAX. LOAD CAPACITY:                5 KG



Combine **Dotted Flat Tray** accessories to your Circle or Oval Dec Board for a better organized and personalized space.



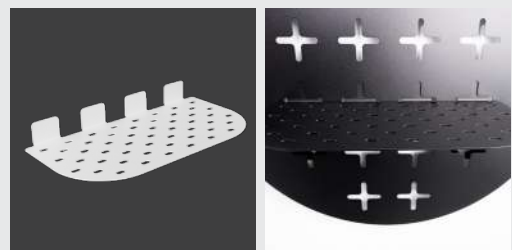
# DOTTED FLAT TRAY — LONG

PRICE 300.-

DIMENSION (mm):                      WEIGHT:

W 250 × H 46 × D 129                0.36 KG

MAX. LOAD CAPACITY:                6 KG



# TISSUE HOLDER

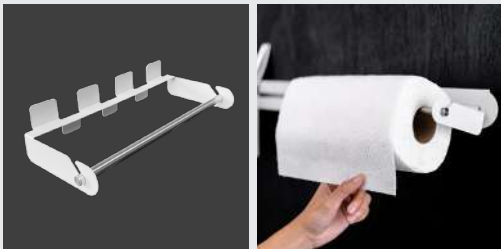
PRICE 490.-

DIMENSION (mm):

W 247 × H 56 × D 112

WEIGHT:

0.39 KG



Simply attach **Tissue Holder** to the versatile Holding Rack Keep to your kitchen and home clean and tidy.



# KNIFE HOLDER

PRICE 490.-

DIMENSION (mm):

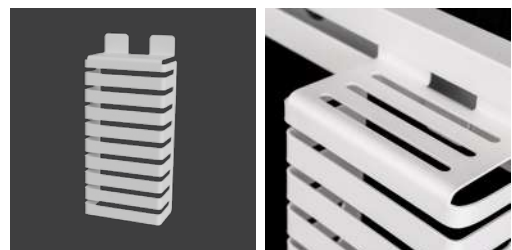
W 107 × H 235 × D 58

WEIGHT:

0.56 KG

MAX. LOAD CAPACITY:

4 KG



Keep your knives safe, tidy, and within reach with our **Knife Holder**. Simply attach it to Holding Rack.



**BEST SELLER**

## PODIUM SHELF

PRICE 2,290.-

DIMENSION (mm):

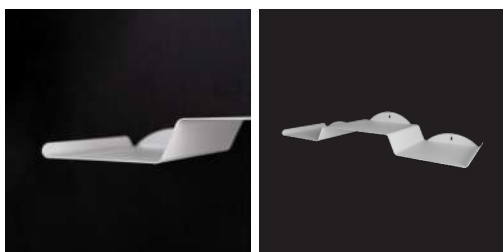
W 664 × H 89 × D 227

WEIGHT:

2.39 KG

MAX. LOAD CAPACITY:

30 KG



Shortlisted DEmark Show 2023

A contemporary **Podium Shelf** with a level depth that offers a fresh way to showcase sacred statues or decorative items while keeping your space organized.

FB SpaceMaker.TH  
IG spacemaker.th  
Line @spacemaker.th

Available  
colors:

Black

White

Grey

# SINGLE SHELF — SHORT

PRICE 1,450.-

DIMENSION (mm): WEIGHT:

W 590 × H 127 × D 235 2.70 KG

MAX. LOAD CAPACITY: 30 KG



This **Single Shelf** offers endless possibilities for customization and organization by utilizing book dividers to create new modular styles.



# SINGLE SHELF — LONG

PRICE 1,790.-

DIMENSION (mm): WEIGHT:

W 800 × H 127 × D 235 3.64 KG

MAX. LOAD CAPACITY: 30 KG



# BOOK DIVIDER

PRICE 350.-

DIMENSION (mm): WEIGHT:

W 126 × H 126 × D 126 0.29 KG



Let your creativity flow with our **Book Dividers!** Keep your books in place or create new visual patterns with decorative items on your shelf. Combine them with our single shelf to add a modular touch to your decor.

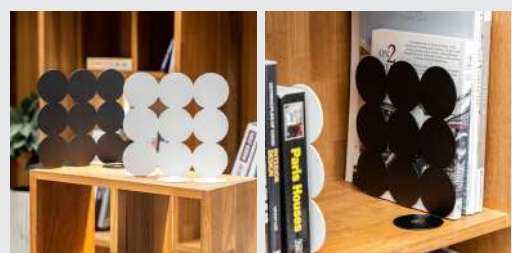


# DOTTED BOOK DIVIDER

PRICE 470.-

DIMENSION (mm): WEIGHT:

W 190 × H 190 × D 126 0.45 KG



Secure your books in style with the **Dotted Book Divider**, whether on your desk or shelf.

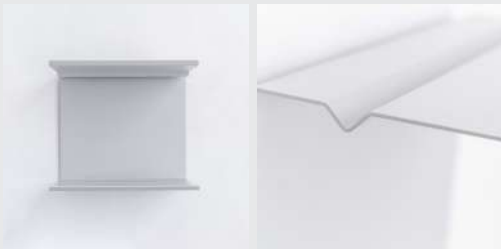
# LARGE WALL SHELF

PRICE 1,190.-

DIMENSION (mm): WEIGHT:

W 303 × H 253 × D 204 2.81 KG

MAX. LOAD CAPACITY: 12 KG



The **Large Wall Shelf** can transition from a convenient side table for your bedroom's bedside essentials to a stylish display unit for showcasing your personalized decor items in your living space. With its abundant modularity, you have the freedom to position it vertically or horizontally, adapting it to suit your specific needs and preferences.

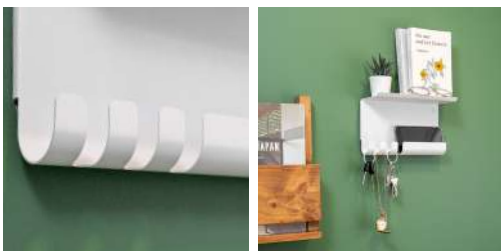


# MEDIUM WALL SHELF

PRICE 890.-

DIMENSION (mm):                      WEIGHT:  
**W 252 × H 159 × D 104**              **0.84 KG**

MAX. LOAD CAPACITY:                  **21 KG**



Organize your keys, letters, other essentials with this compact **Medium Wall Shelf** featuring curved hooks - ideal for small spaces like entrance way. Available in both wall-drilling and non-drilling design options (Non-drilling option have lower weight load capacity.)



**Shortlisted DEmark Show 2023**

A compact and versatile **Small Wall Hanger** for your home's entrance. The different hanger sizes accommodates for your everyday bags, keychains, and even envelopes, keeping your daily items organized. Available in both wall-drilling and non-drilling design options (Non-drilling option have lower weight load capacity.)

# SMALL WALL HANGER

PRICE 470.-

DIMENSION (mm):                      WEIGHT:  
**W 157 × H 75 × D 34**                      **0.26 KG**

MAX. LOAD CAPACITY:                  **21 KG**





# CUSTOMIZE PRODUCT DESIGN

We offer services in customized product design. We recognize the unique requirements of various spaces and usages, and dedicated to tailoring our services to develop products that perfectly suit your needs. We can customize our designs to optimize the utilization of specific spaces and areas, ensuring the best possible functionality and utilization for your satisfaction.



**Stacked Shelving**

# CUSTOMIZE DESIGN SOLUTION TO FIT YOUR BUSINESS

## Designs for Retail



Display Shelves

# Designs for Hotel



# Designs for Cafe / Restaurant

Dining Table

Dining Chair

# CREATIVE



## FOR MORE INFORMATION

Contact our project team

Line : [@spacemaker.th](#)  
Facebook : [spacemaker.th](#)  
Instagram : [spacemaker.th](#)  
Mail : [spacemaker.th@gmail.com](mailto:spacemaker.th@gmail.com)  
Tel : [+662 366 0777](tel:+6623660777)  
Website : [spacemakerdesign.com](http://spacemakerdesign.com)

335/37 Srinagarind road, Nongbon, Pravet, Bangkok, Thailand 10250